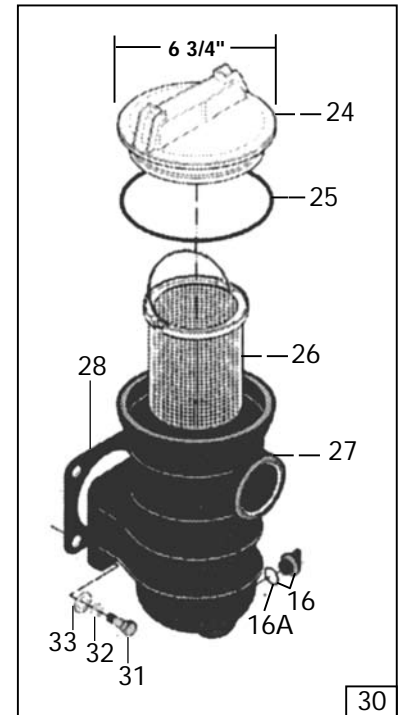
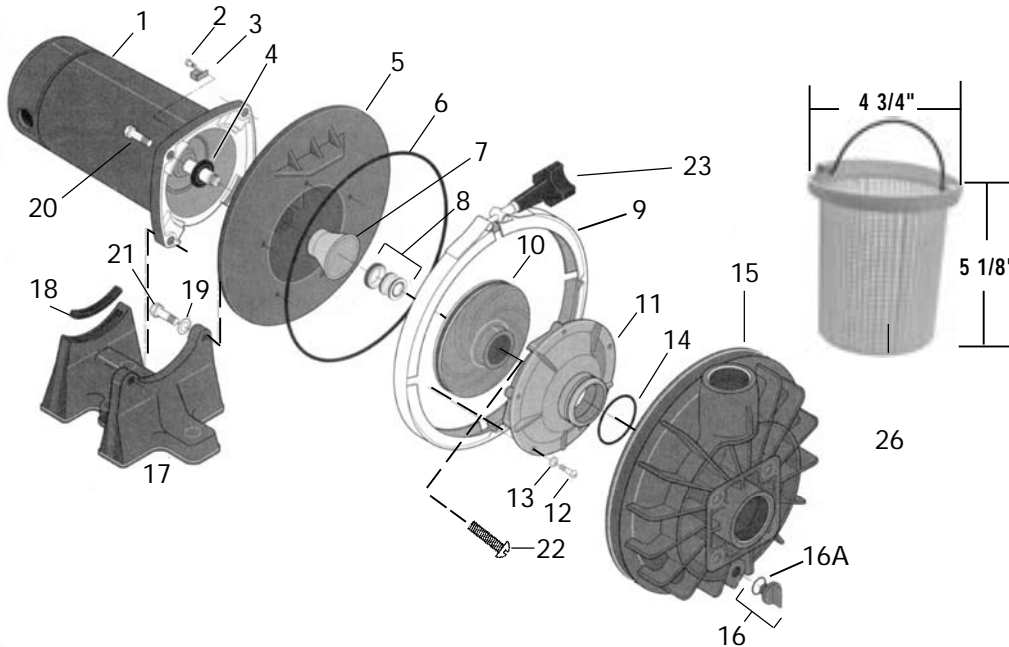
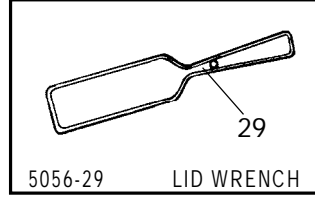
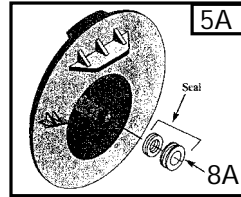
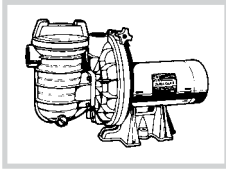


DURA-GLAS - PR, P2R, PRA, P2RA, &amp; MAX-E-GLAS - PE &amp; PEA



| KEY ITEM # | DESCRIPTION | MFG. # |
|------------|-------------|--------|
|------------|-------------|--------|

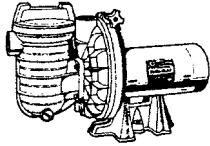
|     |  |             |
|-----|--|-------------|
| 1   | VARIOUS MOTOR - SQUARE FLANGE FRONT OF SECT G  |             |
| 1   | VARIOUS MOTORS FOR PE OR PEA -SEE SQUARE FLANGE ENERGY SAVING MOTORS FRONT OF SECT G |             |
| 2   | 5056-02 SCREW  | U30-692SS   |
| 3   | 5056-03 LUG  | U17-568     |
| 4   | 5056-04 WATER SLINGER  | 17351-0009  |
| 5   | REPLACE NLA SEAL PLATE REP /W 5056-05 KIT  | C103-137P1  |
| 5A  | 5056-05 SEAL PLATE KIT, CURRENT (SEE NOTE 1) INCL. SEAL PLATE, O-RING, SEAL          | C203-193P   |
| 6   | 5056-06 O-RING, SEAL PLATE - ALL VERSIONS  | U9-228      |
| 7   | 5056-07 SEAL INSERT-SS (OLD STYLE ONLY)  | J3-2SS      |
| 7   | 5056-07A SEAL INSERT-COPPER (OLD STYLE ONLY)   | J3-2        |
| 8   | 5056-08 SEAL, SHAFT, UNTIL 10/97   | U109-93SS   |
| 8A  | 5056-08A SEAL, SHAFT, SINCE 10/97  | 17304-0100S |
| 9   | 5056-12A CLAMP, TANK BODY  | C119-375    |
| 10  | VARIOUS SEE IMPELLER/DIFFUSER SELECTION GUIDE ON FOLLOWING PAGE.                     |             |
| 11  | VARIOUS SEE IMPELLER/DIFFUSER SELECTION GUIDE ON FOLLOWING PAGE.                     |             |
| 12  | 5056-22 CAP SCREW  | U30-542SS   |
| 13  | 5056-23 LOCK WASHER  | U43-21SS    |
| 14  | 5056-11 O-RING, DIFFUSER   | U9-226      |
| 15  | 5056-13A BODY, TANK  | C176-47P1   |
| 16  | 5051-30 PLUG, DRAIN WITH O-RING 1/4"   | U178-920P   |
| 16A | 3262-08 O-RING, PLUG   | U9-359      |
| 17  | 5056-24 MOTOR BASE ALL EXCEPT 3 HP.  | C104-42P    |
| 17  | 5056-24A MOTOR BASE FOR 3 HP.  | C104-41P    |
| 18  | 5056-26 PAD, MOTOR   | C35-11      |
| 19  | 6982-0 WASHER, 3/8"  | U43-42SS    |

| KEY ITEM # | DESCRIPTION | MFG. # |
|------------|-------------|--------|
|------------|-------------|--------|

|    |   |               |
|----|---|---------------|
| 20 | REPLACE NLA CAP SCREW, 1" REP W/6901-0  | U30-74SS      |
| 21 | 5056-25A CAP SCREW, 1 3/4"  | U30-77SS      |
| 21 | 5056-25B CAP SCREW, (3 HP ONLY)   | U30-778SS     |
| 22 | 5056-31 IMPELLER SCREW, USED ONLY ON MODELS THAT ARE 1 1/2 HP FULL RATED OR LARGER (5056-09E, 09EA, & 09F). | C30-12        |
| 23 | 5056-30 KNOB, BODY CLAMP  | WC36-22       |
| 24 | 5056-14 COVER, TRAP (6 3/4" DIA.)   | C3-139P1      |
| 24 | 9348-604 LID, GENERIC   | 25304-000-020 |
| 24 | 5056-14B COVER, TRAP F/BAQUACIL(6 3/4" DIA.)  | C3-139P3      |
| 25 | 5056-15 O-RING, TRAP COVER  | U9-229        |
| 26 | 5050-16 BASKET, ORIGINAL EQUIPMENT  | C108-33P      |
| 26 | 5400-B106 BASKET, GENERIC REPLACEMENT   |               |
| 27 | 5056-17 BODY, TRAP  | C153-53P1     |
| 28 | 5050-21 GASKET, PAPER   | C20-19        |
| 28 | 5050-21R GASKET, RUBBER   | C20-123       |
| 29 | 5056-29 WRENCH FOR LID  | U79-11        |
| 30 | 5059J COMPLETE STRAINER POT   | PKG115        |
| 31 | 5056-19 CAP SCREW 5/8-18 X 1 3/4"   | U30-6455      |
| 32 | 5056-20 LOCK WASHER   | U43-1155      |
| 33 | 5055-22 WASHER  | U43-4155      |
| *  | 8300-008 SHAFT SEAL & GASKET KIT<br>1 OF KEYS 8A, 6, 14, 25, 28 (RUBBER)<br>2 OF KEY 16A                    |               |

NOTE 1: EFFECTIVE 10/97 ALL SEAL PLATES MANUFACTURED WILL NO LONGER USE A SEAL INSERT (KEY #7). WHEN REPLACING SEAL PLATE FOR ANY VERSION, ORDER THE SEAL PLATE KIT #5056-05

## IMPELLER-DIFFUSER SELECTION CHART



| SERIES                                   | MODEL                                  | HP          | IMPELLER     |              | DIFFUSER     |          |
|--|--|-------------|--------------|--------------|--------------|----------|
|  |  |             | OUR ITEM NO. | MFG. NO      | OUR ITEM NO. | MFG. NO  |
| <i>Dura-Glas<br/>P2R<br/>Full- Rated</i> | P2R5C-120L                             | 1/2         | 5056-09A     | C105-92PS    | 5056-10A     | C1-216P  |
|  | P2R5D-124L                             | 3/4         | 5056-09CA    | C105-138PEB  | 5056-10C     | C1-200PA |
|  | P2R5E-125L                             | 1           | 5056-09D     | C105-137PEB  | 5056-10C     | C1-200PA |
|  | P2R5F-126L                             | 1 1/2       | 5056-09DB    | C105-137PDB  | 5056-10C     | C1-200PA |
|  | P2R5YD-124L                            | 3/4**       | 5056-09CA    | C105-138PEB  | 5056-10C     | C1-200PA |
|  | P2R5YD-133L                            | 3/4**       | 5056-09CA    | C105-138PEB  | 5056-10C     | C1-200PA |
|  | P2R5YE-125L                            | 1**         | 5056-09D     | C105-137PEB  | 5056-10C     | C1-200PA |
|  | P2R5YE-133L                            | 1**         | 5056-09CA    | C105-138PEB  | 5056-10C     | C1-200PA |
|  | P2R5YF-126L                            | 1 1/2**     | *5056-09EA   | C105-137PDBA | 5056-10C     | C1-200PA |
|  | <i>Dura-Glas<br/>P2RA<br/>Up-Rated</i> | P2RA5C-119L | 1/2          | 5056-09      | C105-92PR    | 5056-10B |
| P2RA5D-120L                              |  | 3/4         | 5056-09A     | C105-92PS    | 5056-10A     | C1-216P  |
| P2RA5E-124L                              |  | 1           | 5056-09CA    | C105-138PEB  | 5056-10C     | C1-200PA |
| P2RA5F-125L                              |  | 1 1/2       | 5056-09D     | C105-137PEB  | 5056-10C     | C1-200PA |
| P2RA5G-126L                              |  | 2           | 5056-09DB    | C105-137PDB  | 5056-10C     | C1-200PA |
| P2RA5YE-124L                             |  | 1**         | 5056-09CA    | C105-138PEB  | 5056-10C     | C1-200PA |
| P2RA5YF-125L                             |  | 1 1/2**     | 5056-09DA    | C105-137PEB  | 5056-10C     | C1-200PA |
| P2RA5YG-126L                             |  | 2**         | *5056-09EA   | C105-137PDBA | 5056-10C     | C1-200PA |
| <i>Max-E-Glas<br/>PE<br/>Full-Rated</i>  | PE5C-120L                              | 1/2         | 5056-09A     | C105-92PS    | 5056-10A     | C1-216P  |
|  | PE5D-124L                              | 3/4         | 5056-09CA    | C105-138PEB  | 5056-10C     | C1-200PA |
|  | PE5E-125L                              | 1           | 5056-09D     | C105-137PEB  | 5056-10C     | C1-200PA |
|  | PE5F-126L                              | 1 1/2       | *5056-09EA   | C105-137PDBA | 5056-10C     | C1-200PA |
|  | PE5G-122L                              | 2           | *5056-09E    | C105-137PDA  | 5056-10C     | C1-200PA |
|  | PE5C-120                               | 1/2         | 5056-09A     | C105-92PS    | 5056-10A     | C1-216P  |
|  | PE52D-124                              | 3/4         | 5056-09CA    | C105-138PEB  | 5056-10C     | C1-200PA |
|  | PE52E-125                              | 1           | 5056-09D     | C105-137PEB  | 5056-10C     | C1-200PA |
|  | PE52F-126                              | 1 1/2       | *5056-09EA   | C105-137PDBA | 5056-10C     | C1-200PA |
|  | PE52G-122                              | 2           | *5056-09E    | C105-137PDA  | 5056-10C     | C1-200PA |
|  | PE6C-120L                              | 1/2         | 5056-09A     | C105-92PS    | 5056-10A     | C1-216P  |
|  | PE6D-124L                              | 3/4         | 5056-09CA    | C105-138PEB  | 5056-10C     | C1-200PA |
|  | PE6E-125L                              | 1           | 5056-09D     | C105-137PEB  | 5056-10C     | C1-200PA |
|  | PE6F-126L                              | 1 1/2       | *5056-09EA   | C105-137PDBA | 5056-10C     | C1-200PA |
|  | PE6G-122L                              | 2           | *5056-09E    | C105-137PDA  | 5056-10C     | C1-200PA |
|  | PE6H-139L                              | 3           | *5056-09F    | C105-137PKBA | 5056-10D     | C1-259P  |
| PE6H3-139                                | 3                                      | *5056-09F   | C105-137PKBA | 5056-10D     | C1-259P      |          |
| PE62H-139                                | 3                                      | *5056-09F   | C105-137PKBA | 5056-10D     | C1-259P      |          |
| <i>Max-E-Glas<br/>PEA<br/>Up-Rated</i>   | PEA5D-120L                             | 3/4         | 5056-09A     | C105-92PS    | 5056-10A     | C1-216P  |
|  | PEA5E-124L                             | 1           | 5056-09CA    | C105-138PEB  | 5056-10C     | C1-200PA |
|  | PEA5F-125L                             | 1 1/2       | 5056-09D     | C105-137PEB  | 5056-10C     | C1-200PA |
|  | PEA5G-126L                             | 2           | *5056-09EA   | C105-137PDBA | 5056-10C     | C1-200PA |
|  | PEA5G-126LC                            | 2           | *5056-09EA   | C105-137PDBA | 5056-10C     | C1-200PA |
|  | PEA6D-120L                             | 3/4         | 5056-09A     | C105-92PS    | 5056-10A     | C1-216P  |
|  | PEA6E-124L                             | 1           | 5056-09CA    | C105-138PEB  | 5056-10C     | C1-200PA |
|  | PEA6F-125L                             | 1 1/2       | 5056-09D     | C105-137PEB  | 5056-10C     | C1-200PA |
|  | PEA6G-126L                             | 2           | *5056-09EA   | C105-137PDBA | 5056-10C     | C1-200PA |
|  | PEAA5G-122L                            | 2 1/2       | *5056-09E    | C105-137PDA  | 5056-10C     | C1-200PA |
|  | PEAA5G-122LC                           | 2 1/2       | *5056-09E    | C105-137PDA  | 5056-10C     | C1-200PA |
|  | PEAA6G-122L                            | 2 1/2       | *5056-09E    | C105-137PDA  | 5056-10C     | C1-200PA |
|  | PEA52F-125                             | 1 1/2       | 5056-09DA    | C105-137PEBA | 5056-10C     | C1-200PA |
|  | PEA52G-126                             | 2           | *5056-09EA   | C105-137PDBA | 5056-10C     | C1-200PA |

\* Uses Impeller Screw (Item #5056-31)

\*\* Two - Speed Motor